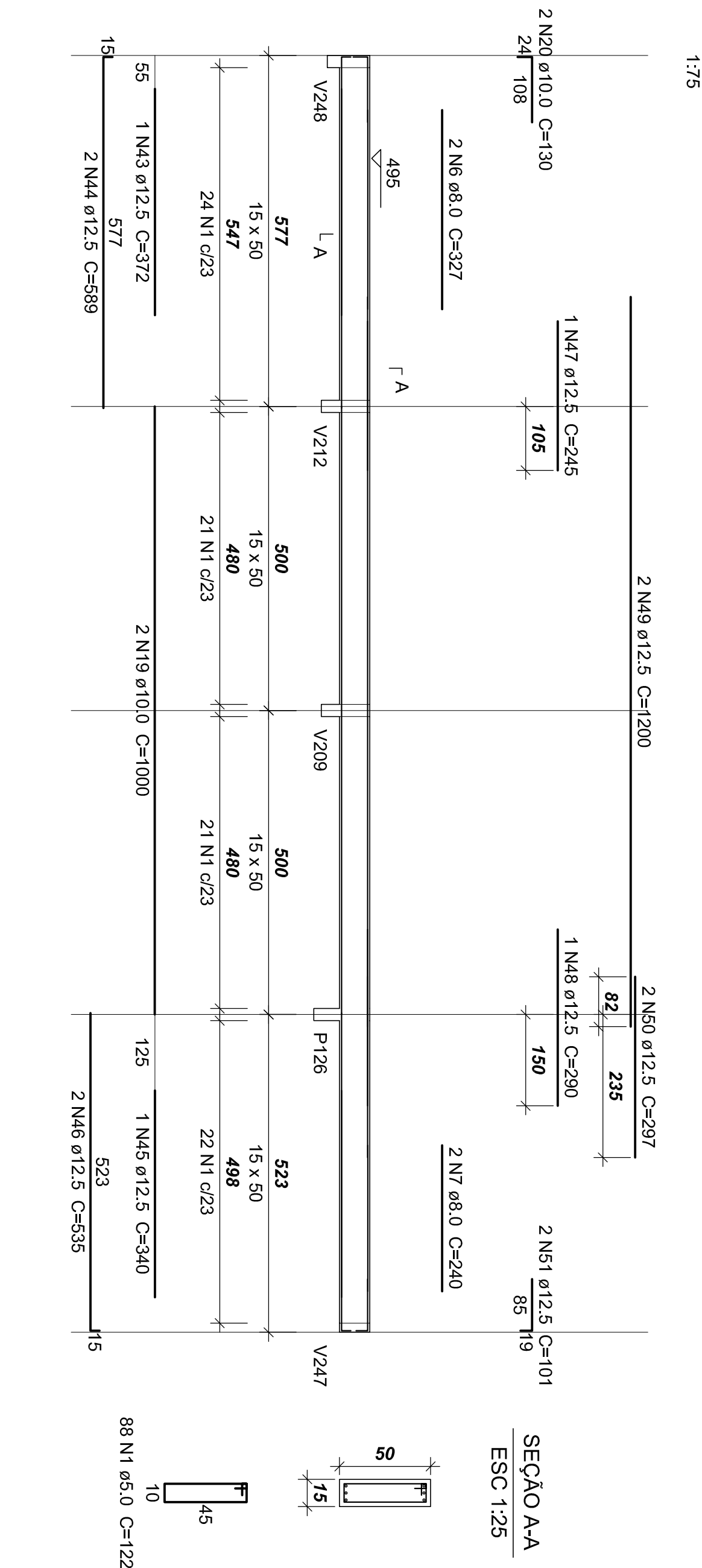
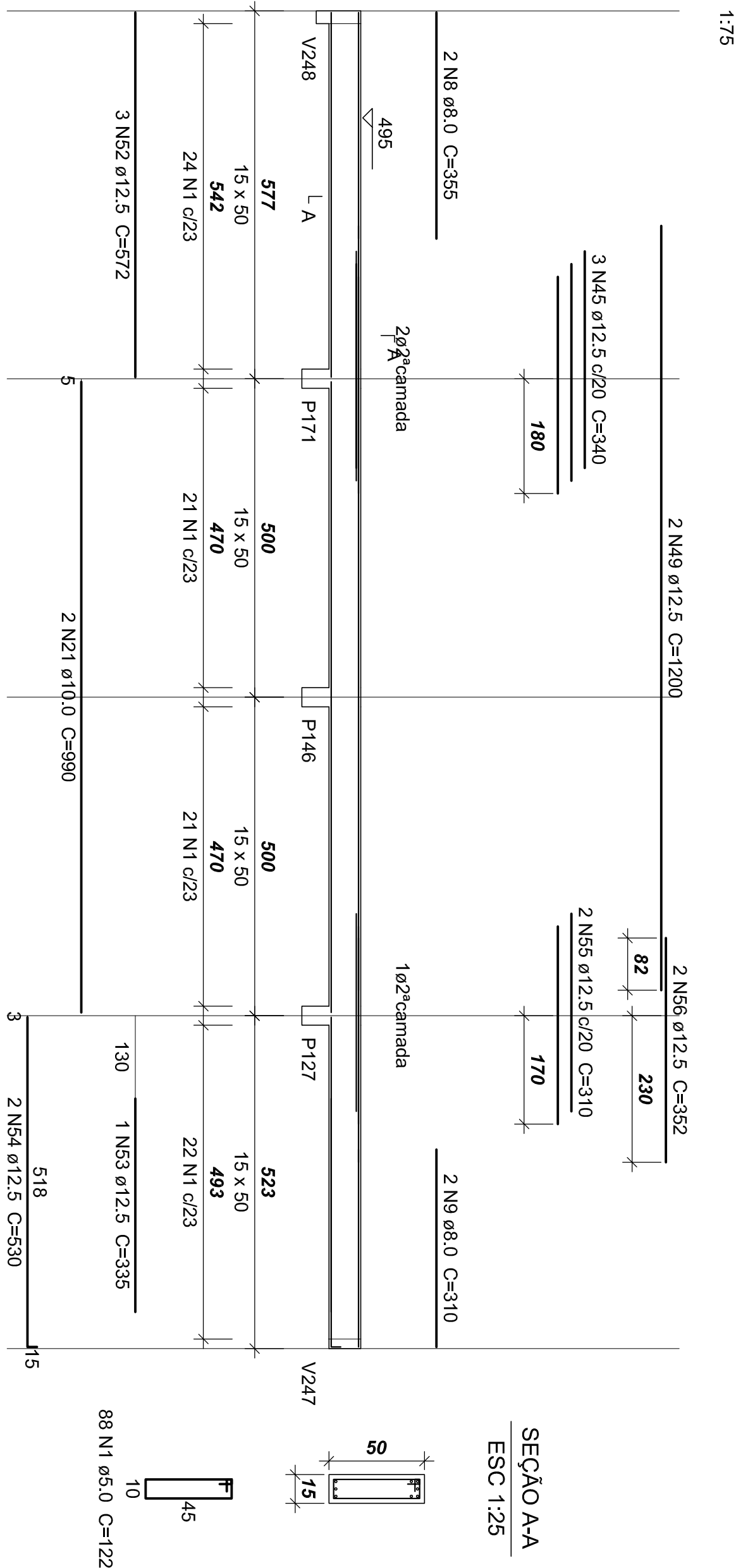


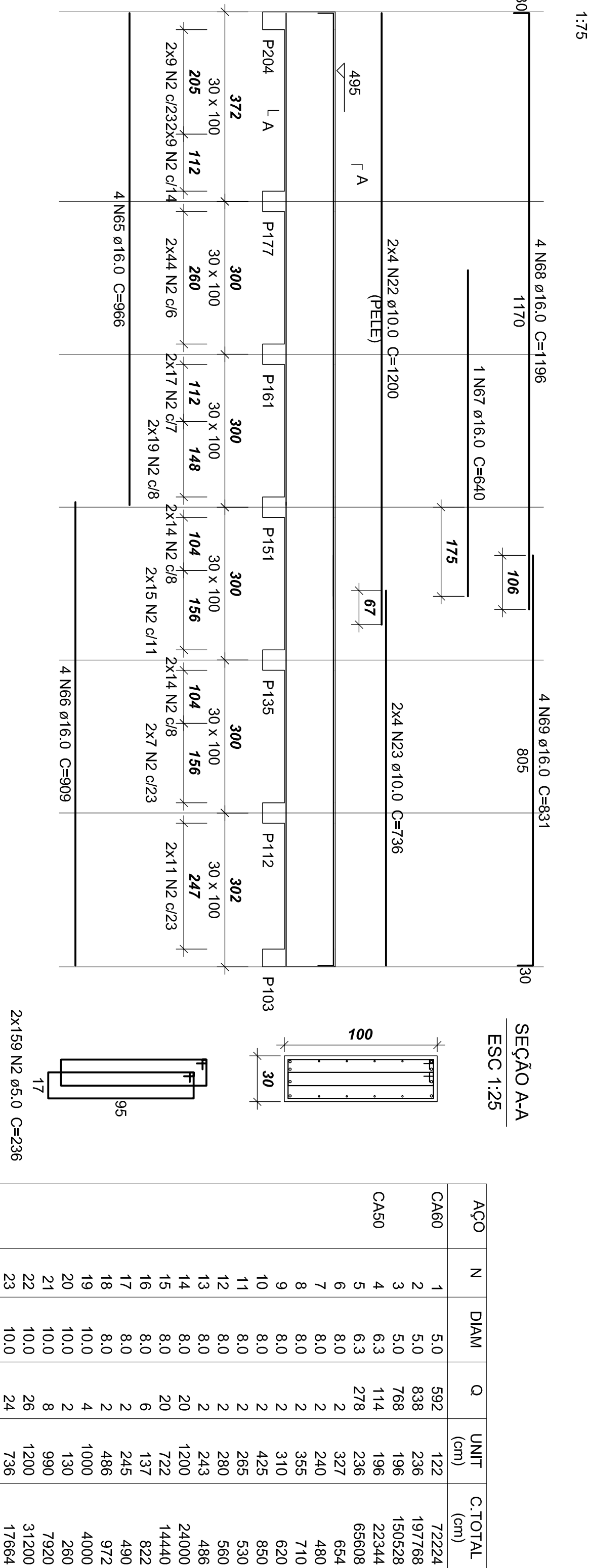
## V228 (15 x 50)



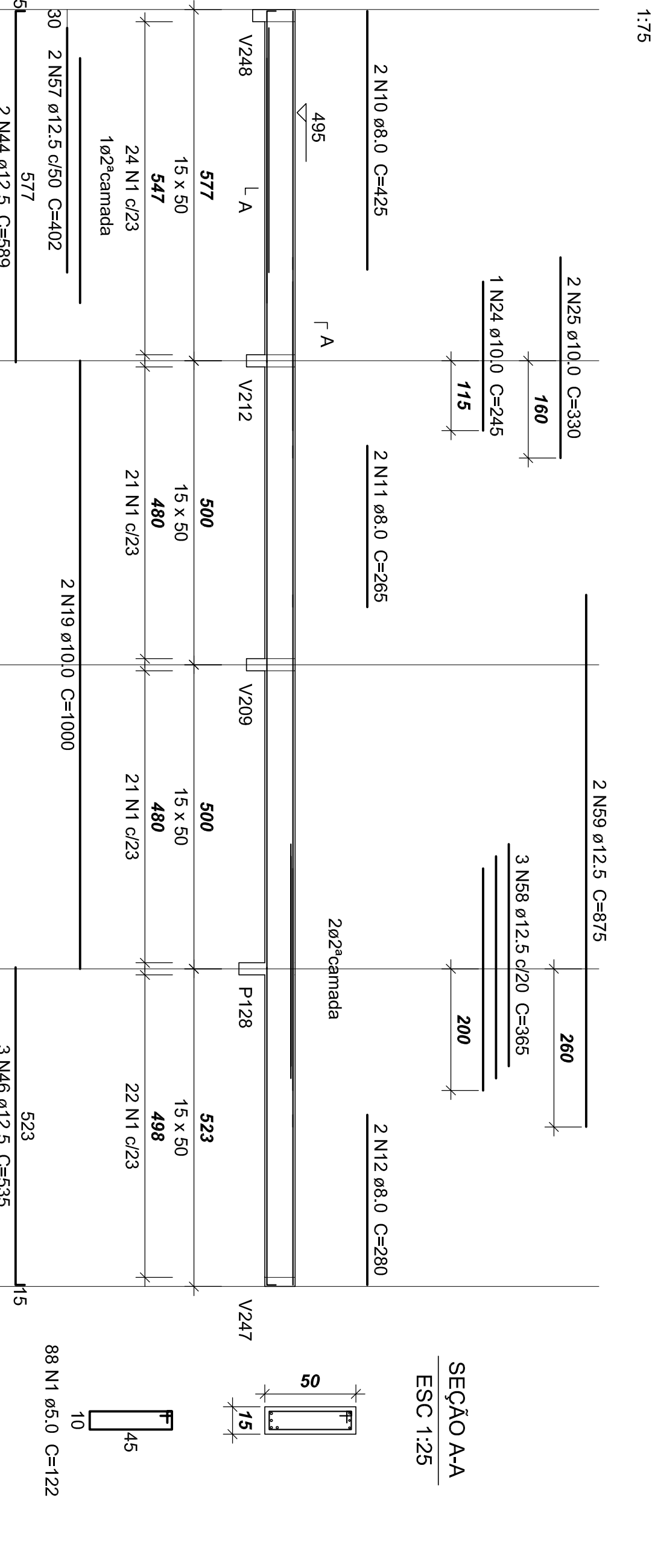
## V230 (15 x 50)



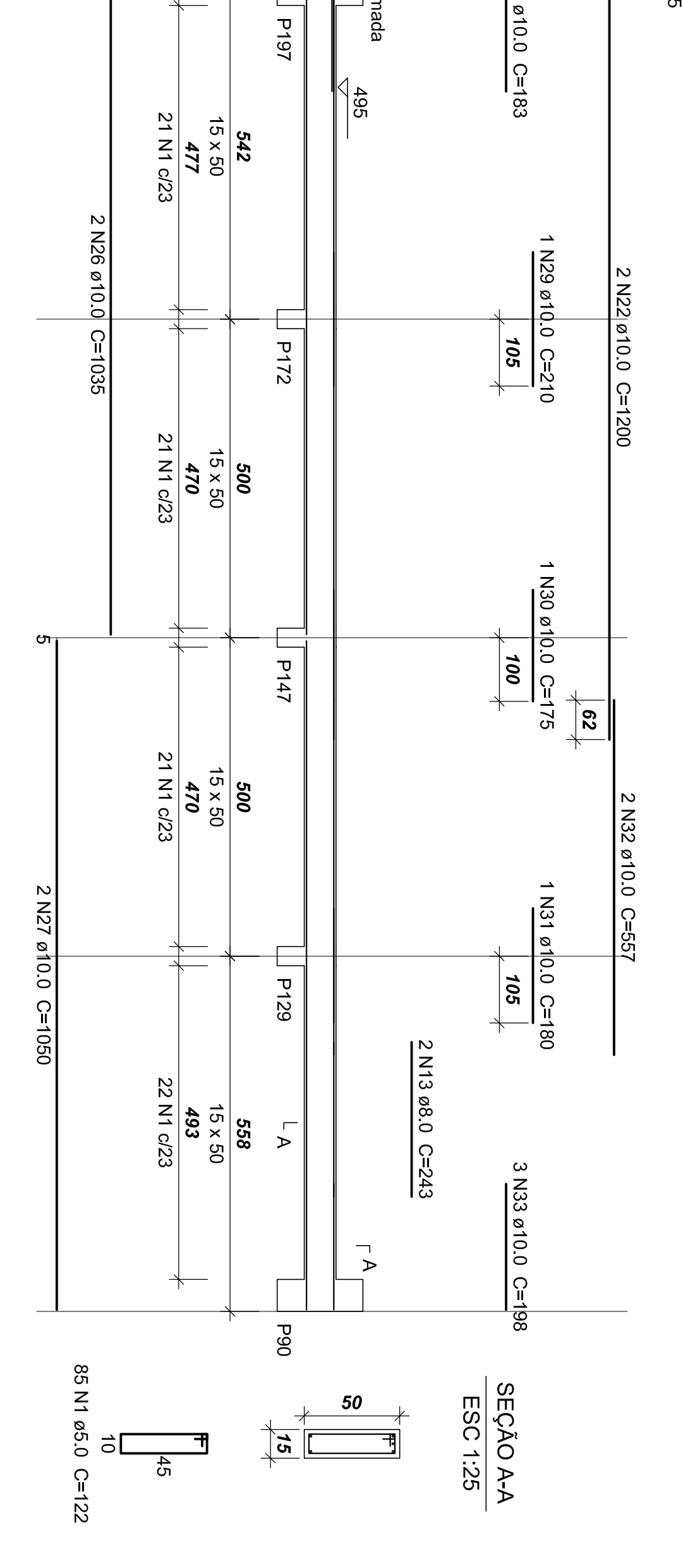
## V240 (30 x 100)



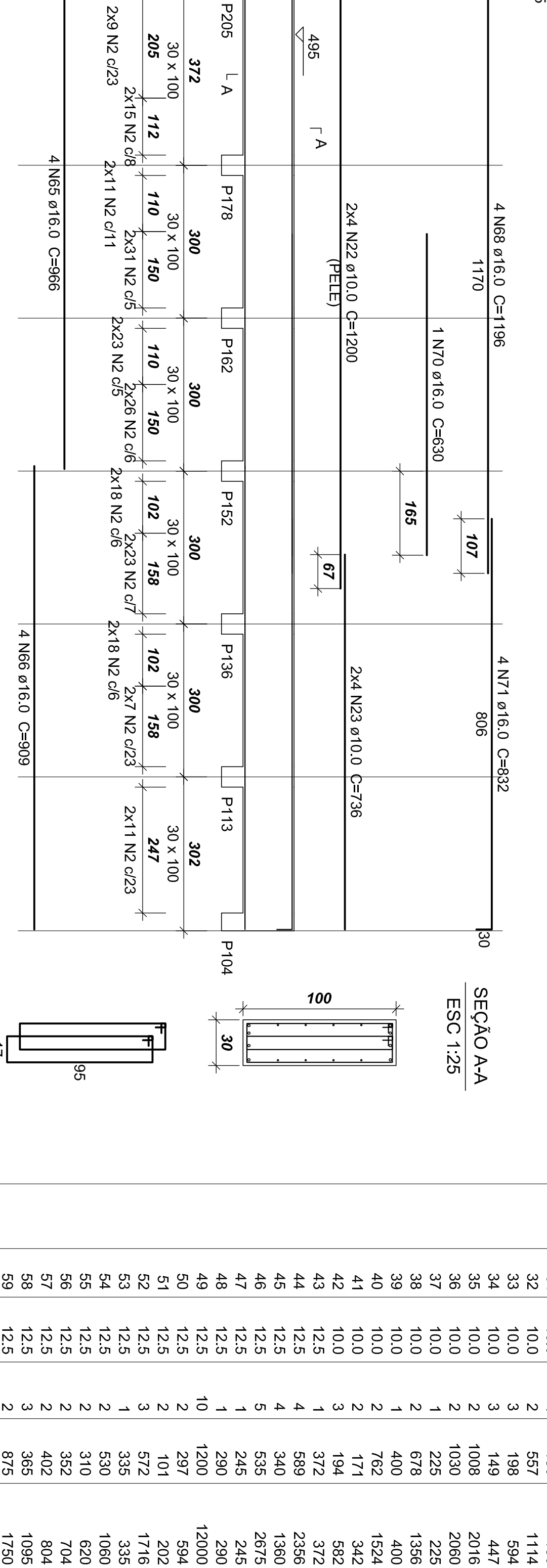
## V233 (15 x 50)



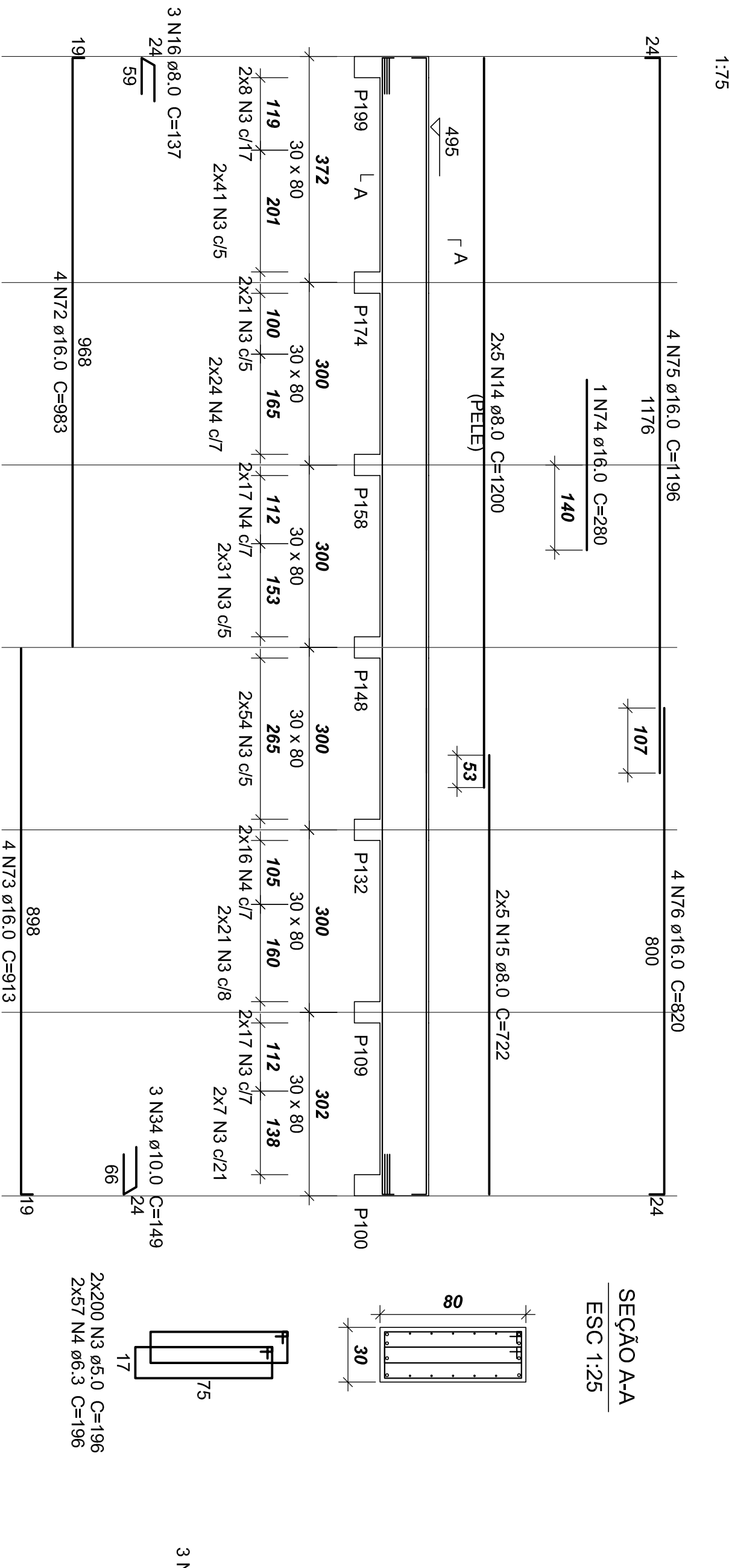
## V235 (15 x 50)



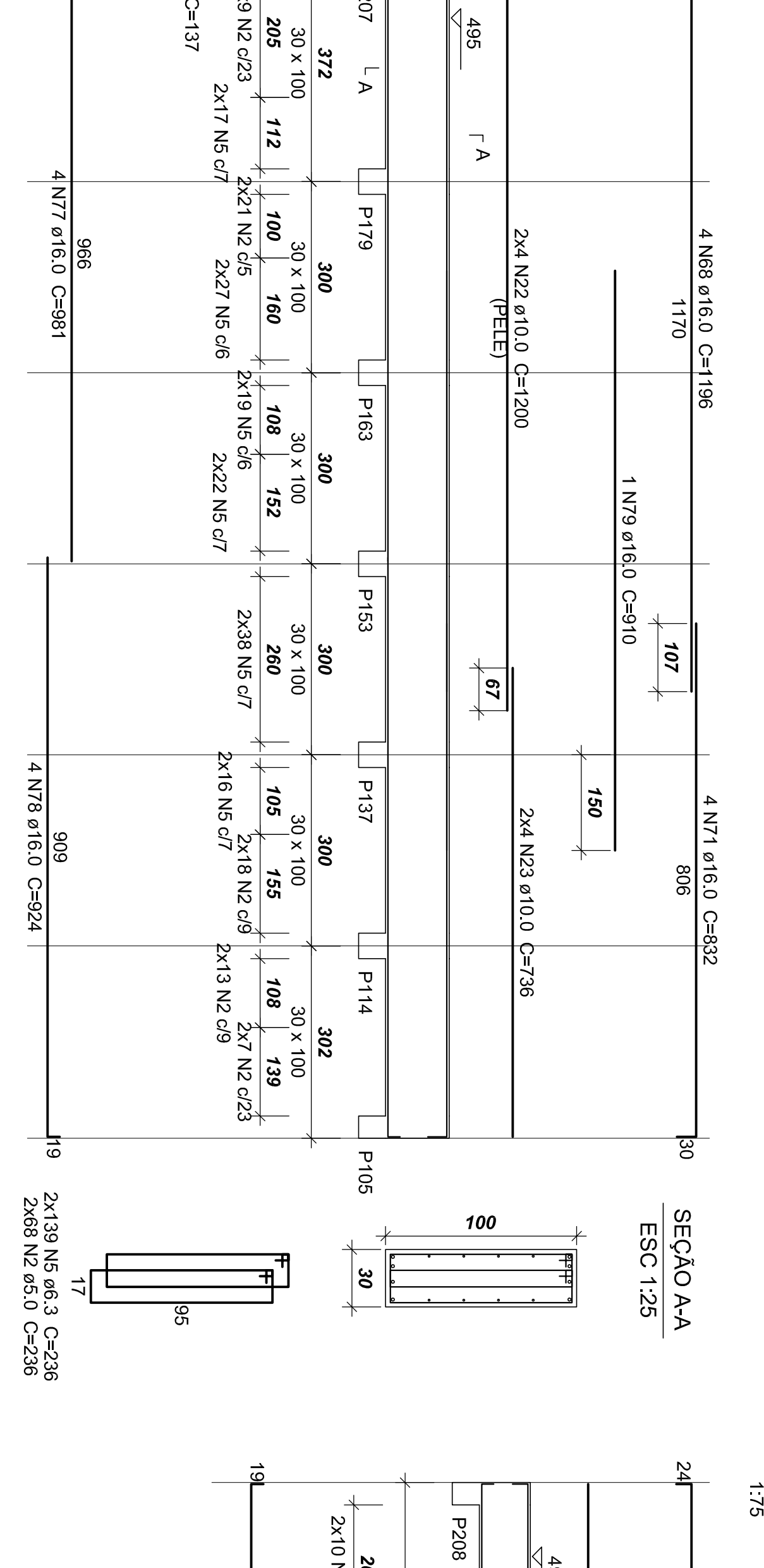
## V242 (30 x 100)



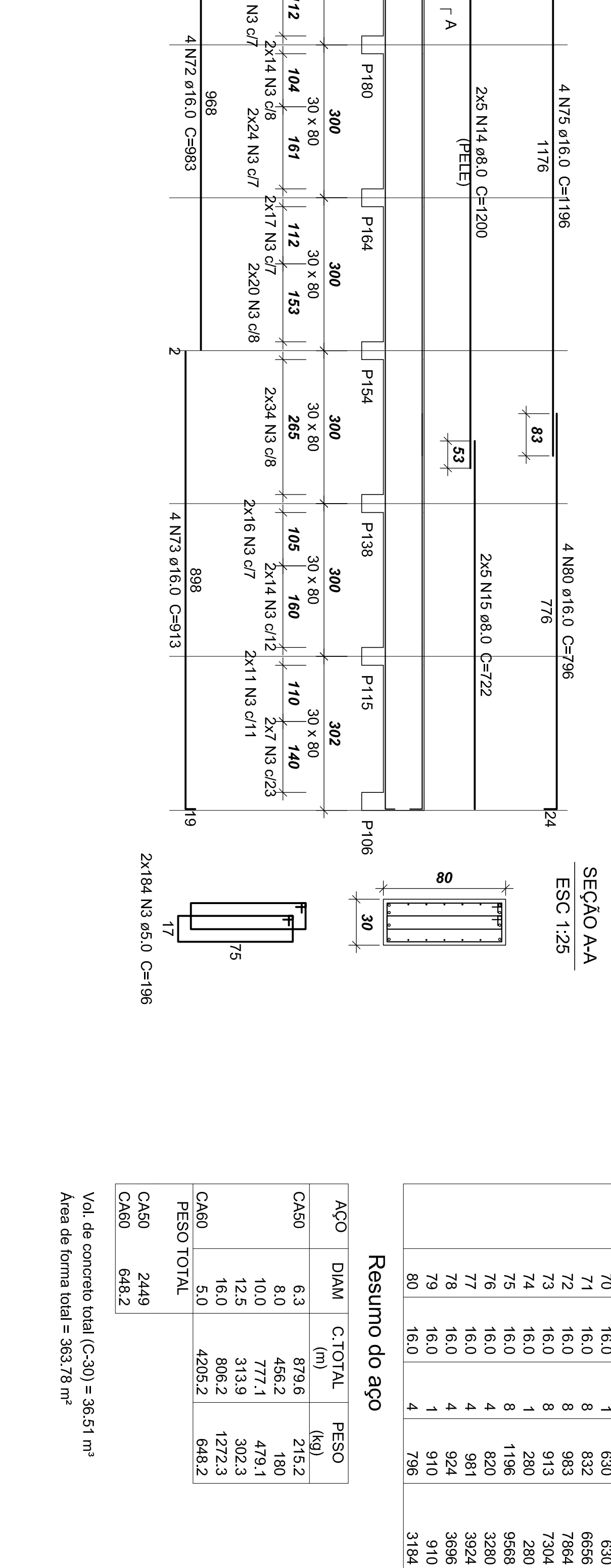
## V236 (30 x 80)



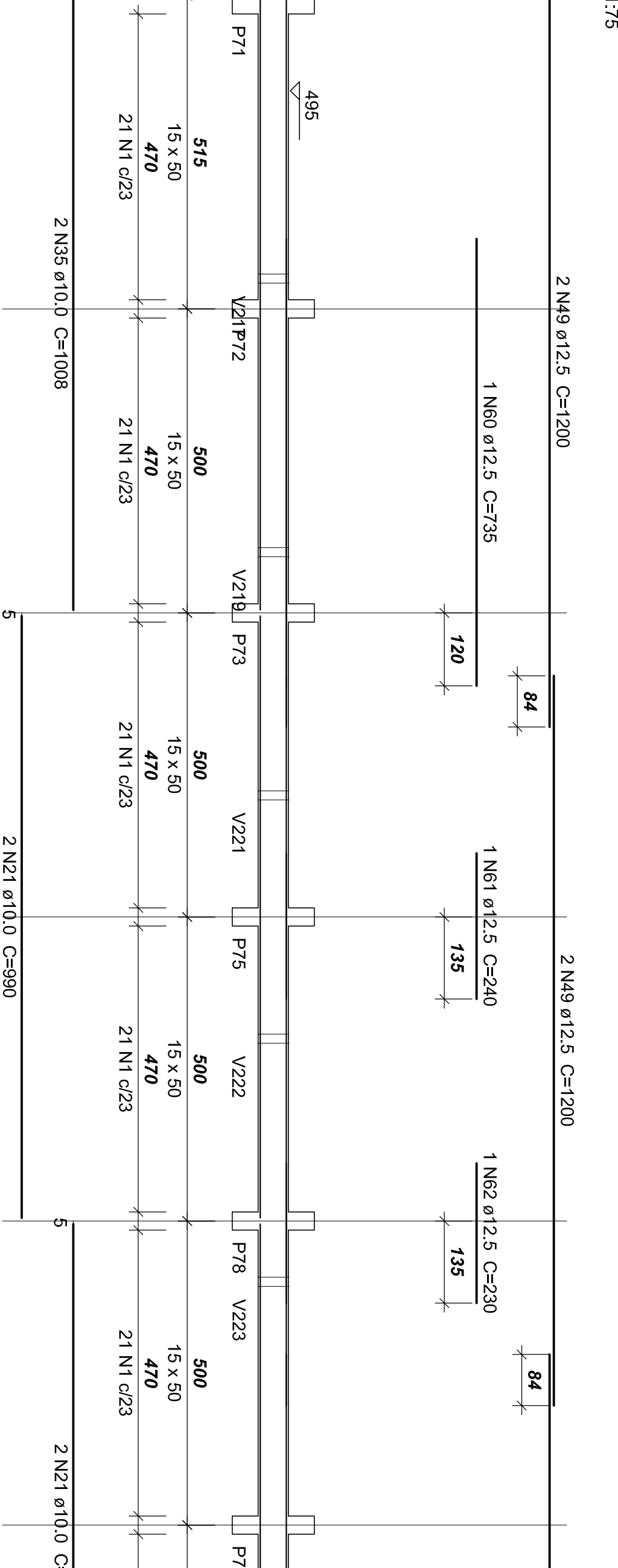
## V244 (30 x 100)



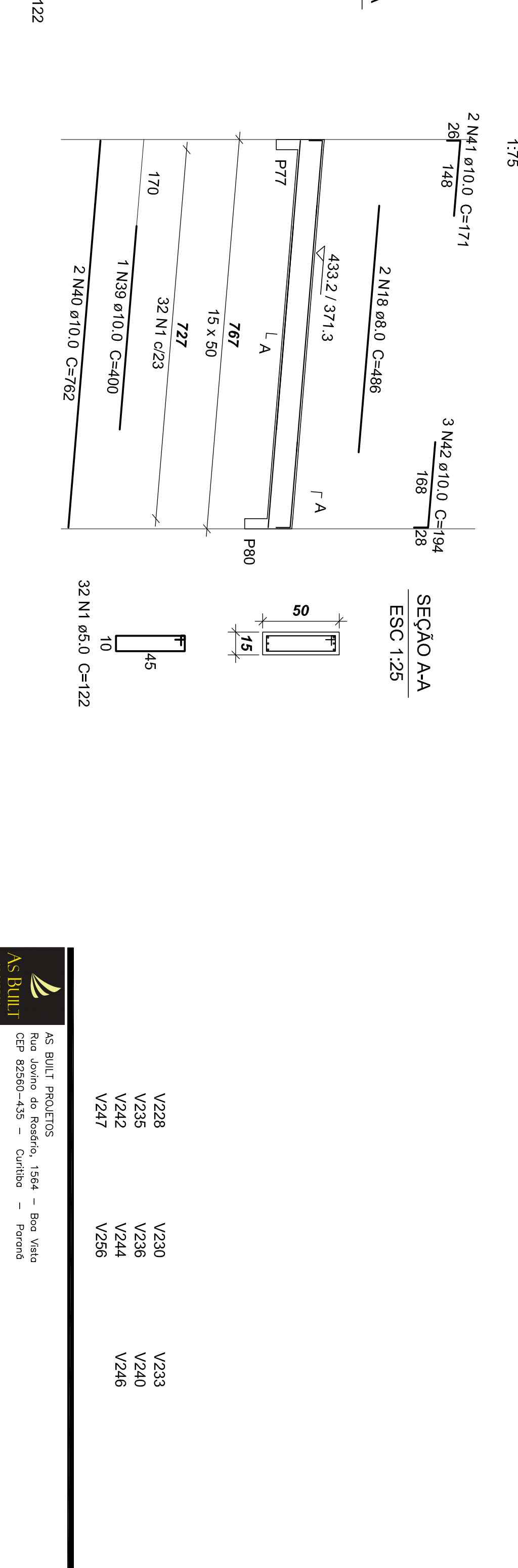
## V246 (30 x 80)



## V247 (15 x 50)



## V256 (15 x 50)



Relação do aço

ACO	N	DIAM	O	UNIT	C TOTAL
CA60	1	5.0	592	122	72224
CA60	2	5.0	838	236	197768
CA60	3	5.0	1144	186	212344
CA60	4	6.3	278	236	65668
	6	8.0	2	327	654
	7	8.0	2	240	480
	8	8.0	2	310	620
	9	8.0	2	425	850
	10	8.0	2	285	530
	11	8.0	2	280	560
	12	8.0	2	245	490
	13	8.0	2	245	490
	14	8.0	2	245	490
	15	8.0	2	245	490
	16	8.0	2	245	490
	17	8.0	2	245	490
	18	8.0	2	245	490
	19	8.0	2	245	490
	20	10.0	2	130	280
	21	10.0	2	990	7320
	22	10.0	2	1200	9120
	23	10.0	2	1245	9540
	24	10.0	2	1245	9540
	25	10.0	2	1245	9540
	26	10.0	2	1035	2070
	27	10.0	2	1035	2070
	28	10.0	2	1035	2070
	29	10.0	1	210	210
	30	10.0	1	175	175
	31	10.0	1	180	180
	32	10.0	1	557	114
	33	10.0	1	557	114
	34	10.0	1	447	447
	35	10.0	1	1008	2016
	36	10.0	1	225	225
	37	10.0	1	225	225
	38	10.0	1	225	225
	39	10.0	1	400	400
	40	10.0	2	762	1524
	41	10.0	2	171	342
	42	10.0	2	194	388
	43	10.0	2	194	388
	44	12.5	4	599	2396
	45	12.5	4	340	1360
	46	12.5	5	535	2675
	47	12.5	5	245	245
	48	12.5	10	287	1000
	49	12.5	10	290	1000
	50	12.5	10	290	1000
	51	12.5	3	572	1716
	52	12.5	3	572	1716
	53	12.5	2	530	1060
	54	12.5	2	310	620
	55	12.5	2	310	620
	56	12.5	2	352	704
	57	12.5	2	402	804
	58	12.5	2	402	804
	59	12.5	2	875	1750
	60	12.5	1	735	735
	61	12.5	1	240	240
	62	12.5	1	220	220
	63	12.5	1	220	220
	64	12.5	2	795	1590
	65	16.0	8	965	7728
	66	16.0	8	909	7272
	67	16.0	12	1149	14388
	68	16.0	12	1149	14388
	69	16.0	4	831	3324
	70	16.0	1	630	630
	71	16.0	1	832	832
	72	16.0	8	832	6656
	73	16.0	8	832	6656
	74	16.0	1	280	280
	75	16.0	8	1196	9568
	76	16.0	4	820	3280
	77	16.0	4	820	3280
	78	16.0	4	910	3640
	79	16.0	1	910	910
	80	16.0	4	795	3184

### Resumo do aço

ACO	DIAM	C TOTAL	PESO
CA60	8.3	8785	215.2
CA60	10.0	7771	479.1
CA60	12.5	3139	302.3
CA60	16.0	806.2	1272.3
CA60	8.0	4205.2	646.2
PESO TOTAL			
CA60	2449		
CA60	648.2		

Vol. de concreto total (C=30) = 36.51 m³  
 Área de forma total = 363.78 m²